



SPRINGFIELD LOCAL SCHOOL DISTRICT

EXCELLENT
District Rating

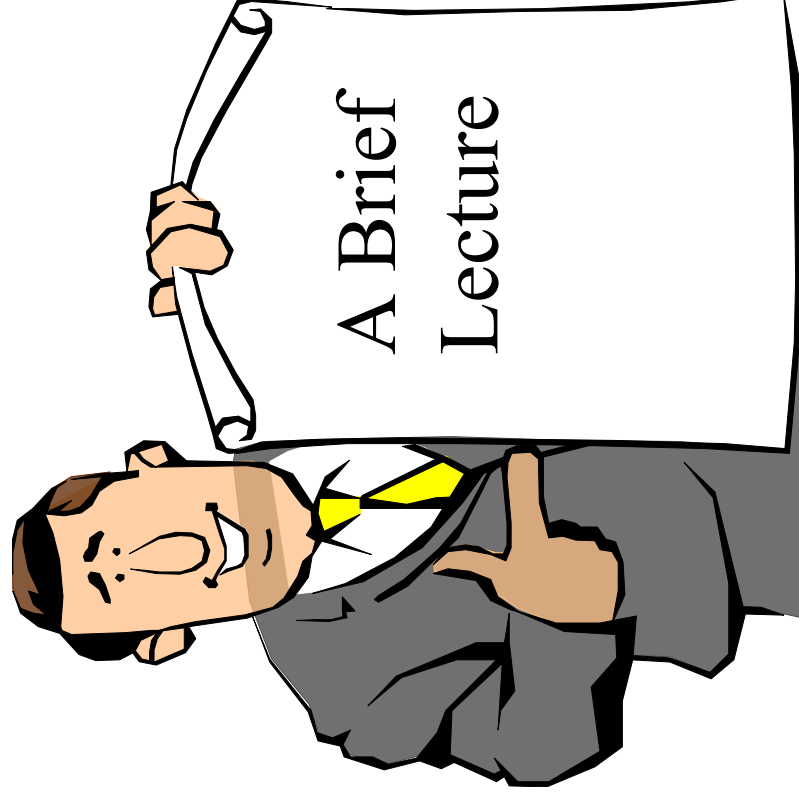


Executive Partnering Workshop July 14, 2010

Facilitated by: Pat O'Brien
Project Management Consultants

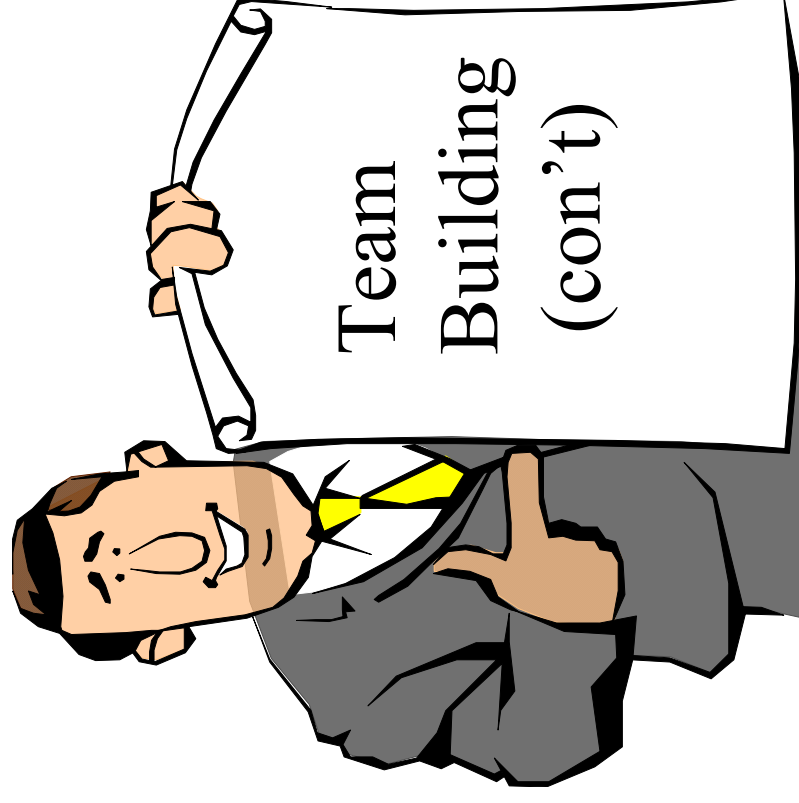
Agenda

- Housekeeping
- Active Introductions
- What are the goals of this project?
- How will the project achieve those goals?



Agenda (con't)

- Breakout Topics
 - Project Alignment:
Roles and Responsibilities
 - Project Issues and OSFC guidelines



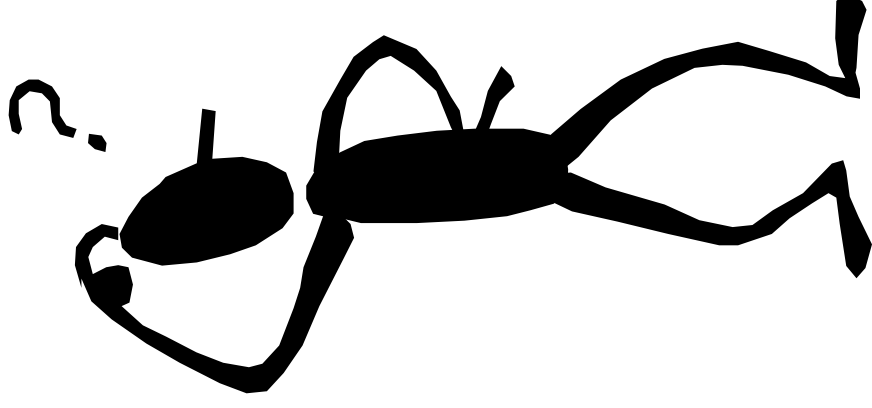
Housekeeping

- Minutes
- Break/Phones
- Lunch



Active Introductions

- Name
- Organization
- Role in Project
- What experience do you have with school construction?
- What do I hope to get out of this session?



Alphabet Soup of Acronyms

LFI: Locally funded initiative

RFI: Request for information

POR: Program of requirements

SD, DD, CD: Design phases

MEP: Mechanical, Electrical, Plumbing

OSDM: Design Manual

PR or RFP: Proposal Request or Request for Proposal

LEED: Leadership in Energy and Environmental
Design



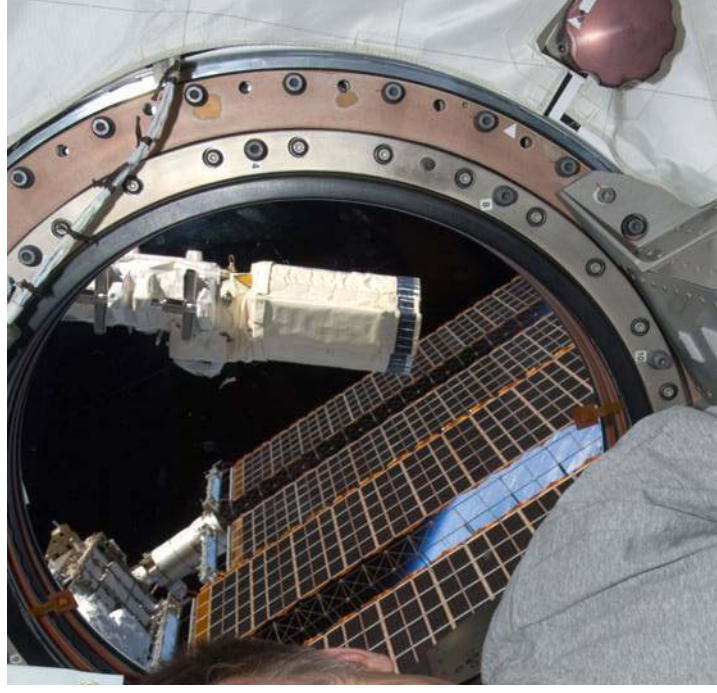
GRANDMA

**The Problem:
School Construction can be
Difficult!!**



PROJECT FOCUS

QUALITY DESIGN & CONSTRUCTION



QUALITY DESIGN & CONSTRUCTION

- How do we ensure quality?
- How do we coordinate and integrate input from the *stakeholders*?
- Is there a relationship between:
 - Good design documents and quality bidders?
 - Quality construction and quality contractors?

Master Plan Review

Allowances

- Site safety? \$300K
- LEED
- demolition

2 new buildings: Jr High + HS
LFI



Current Issues

A. Design Assumptions

???



What is the process for design and design input and review?

- Education
- Community
- OSFC
- CM : Cost/Schedule/Quality



Current Issues

B. Design Progress Specific issues

POR-SD-DD-CD-Bid/Award - Construction

C. Project Issues

: Permitting & Inspections?

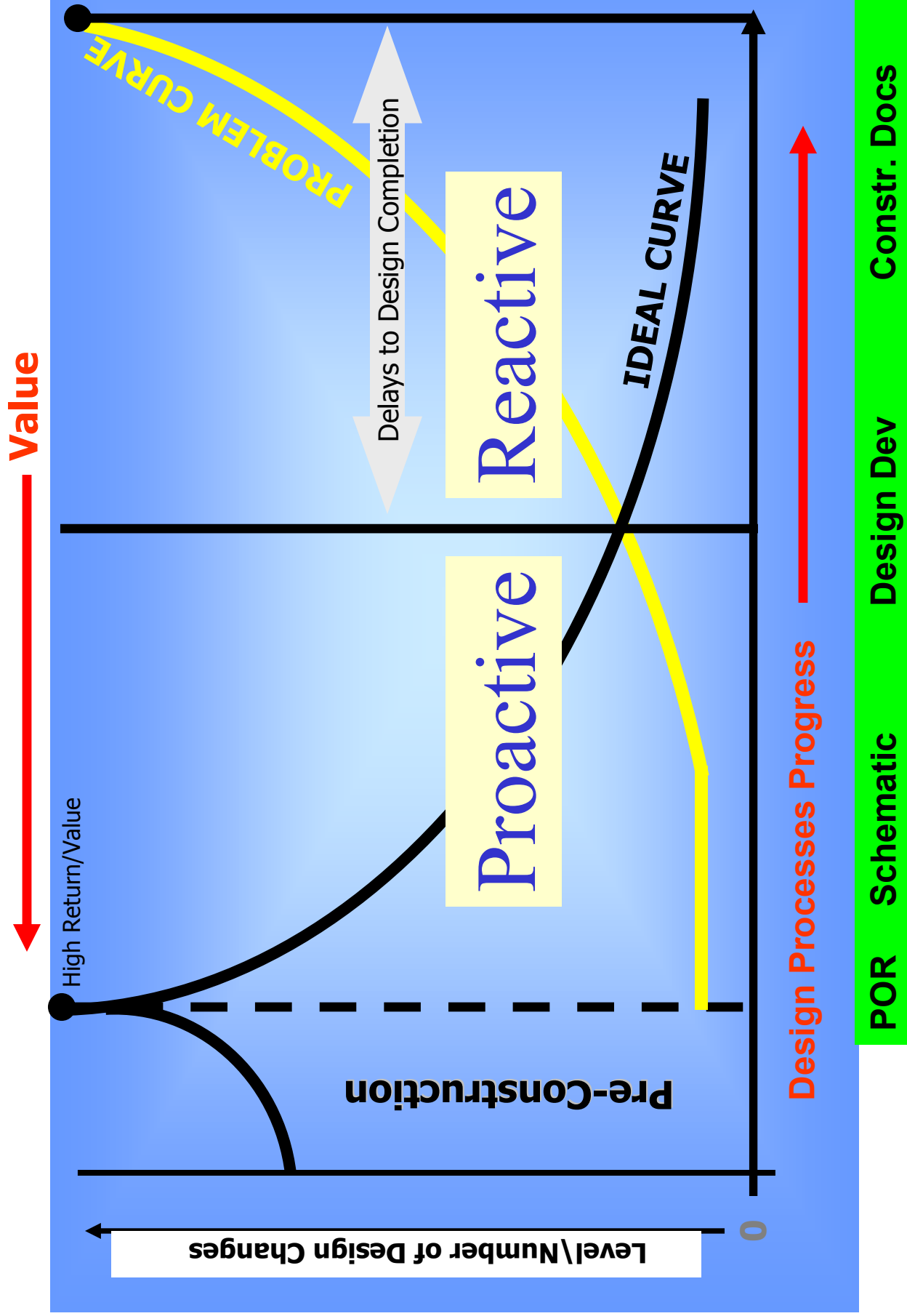


D. Misc.:

: other consultants? (roofing...)



DESIGN EFFORT VALUE



Current Issues

E. Questions?

Design?

Construction?

Schedule?



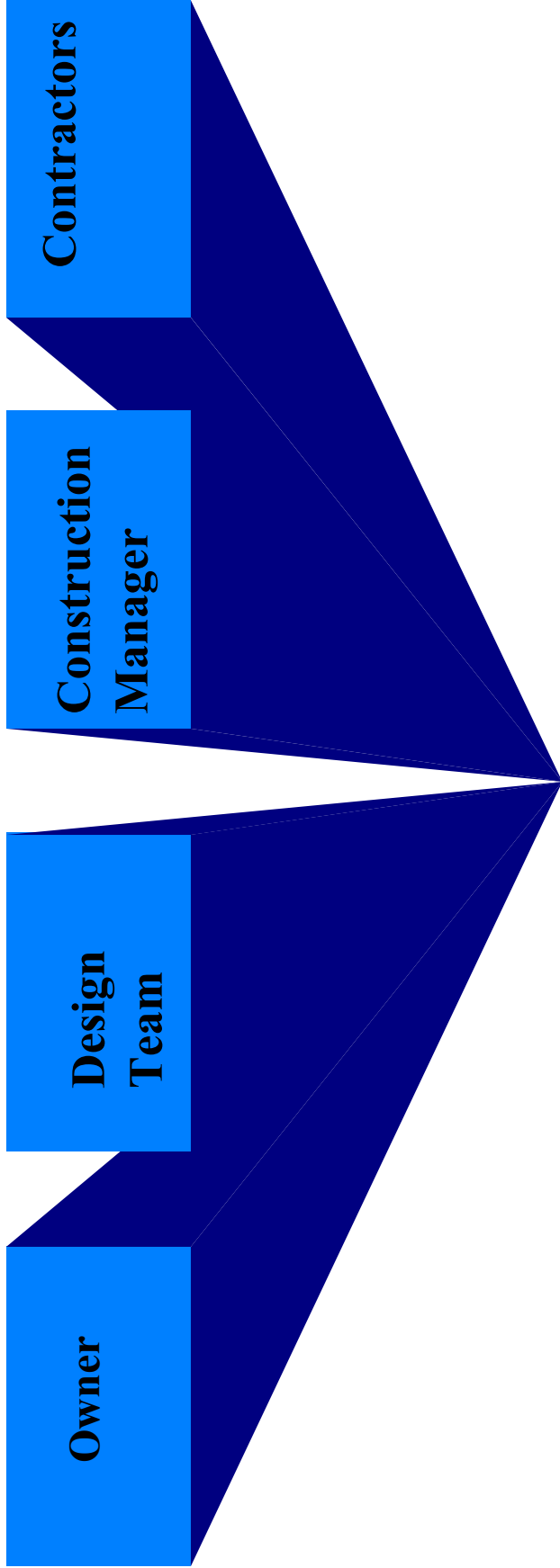
Current Issues Discussion

Public Relations

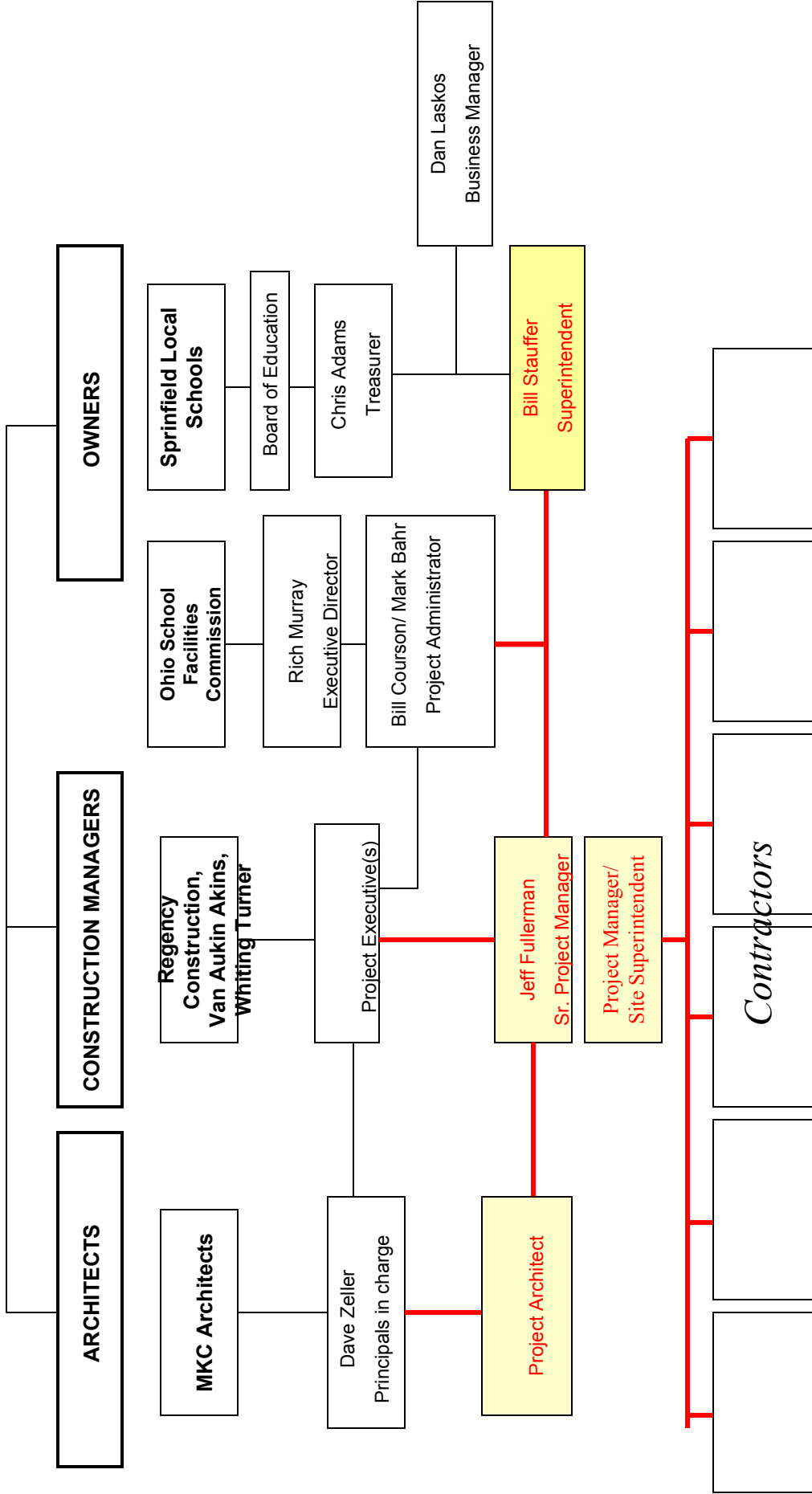
- How does the project communicate with the public? Are your consultants involved?

Funding: LFI's/cost overruns/change orders/project draws on State funds/retainage

What are our Roles/Responsibilities



Project Organization Chart



Current Issues Discussion





The End

©Project Management Consultants,
All Rights Reserved